



2009-2010 GMT Quarterly Report for District (or Undistricted) **District 118 Y**

GMT: **HOWARD PATRICK LEE**

Location: **TURKEY**

GMT CA: **4**

CLUBS

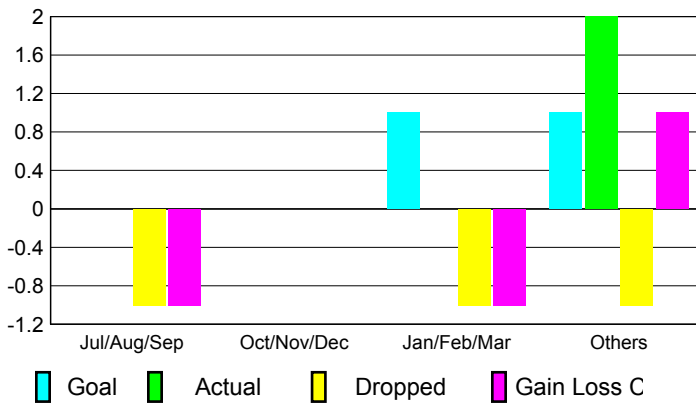
Club Results
2009-2010

Clubs
2008-2009

| Month | New Club Goal | Actual New Clubs | Actual Dropped Clubs | Gain/Loss of Clubs | Gain/Loss of Clubs |
|---------------|---------------|------------------|----------------------|--------------------|--------------------|
| Jul/Aug/Sep | 0 | 0 | -1 | -1 | 0 |
| Oct/Nov/Dec | 0 | 0 | 0 | 0 | 0 |
| Jan/Feb/Mar | 1 | 0 | -1 | -1 | 3 |
| Apr/May/June | 1 | 2 | -1 | 1 | 1 |
| Totals | 2 | 2 | -3 | -1 | 4 |

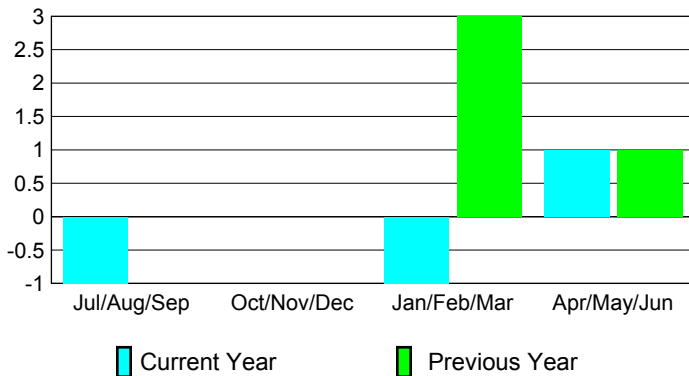
Club Results 2009-2010

Goal, New, Dropped, Gain/Loss



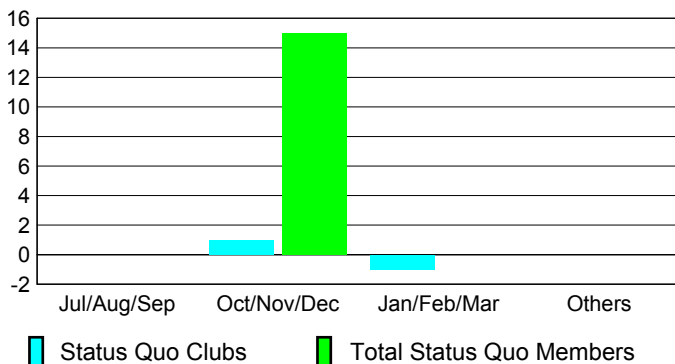
Comparison of Club Gain/Loss

Current Year Compared to the Previous Year



YTD Status Quo Clubs 2009-2010

Status Quo Clubs Compared to Status Quo Members



MEMBERSHIP

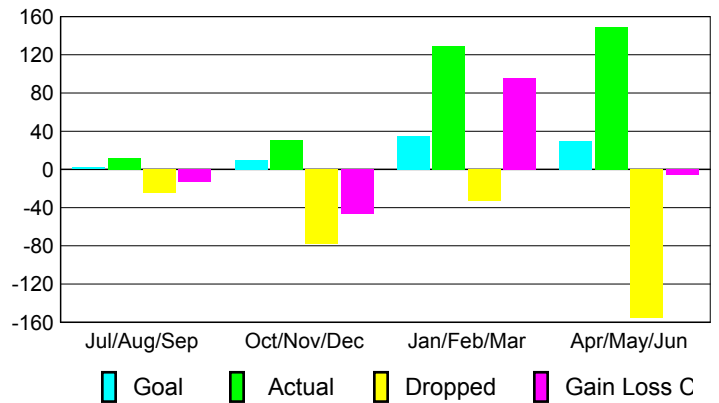
Membership Results
2009-2010

Membership
2008-2009

| Month | Net Memb Goal | Actual New Memb | Actual Dropped Memb | Gain/Loss of Memb | Gain/Loss of Memb |
|---------------|---------------|-----------------|---------------------|-------------------|-------------------|
| Jul/Aug/Sep | 2 | 12 | -25 | -13 | -15 |
| Oct/Nov/Dec | 10 | 31 | -78 | -47 | -18 |
| Jan/Feb/Mar | 35 | 129 | -33 | 96 | 146 |
| Apr/May/June | 30 | 149 | -155 | -6 | -36 |
| Totals | 77 | 321 | -291 | 30 | 77 |

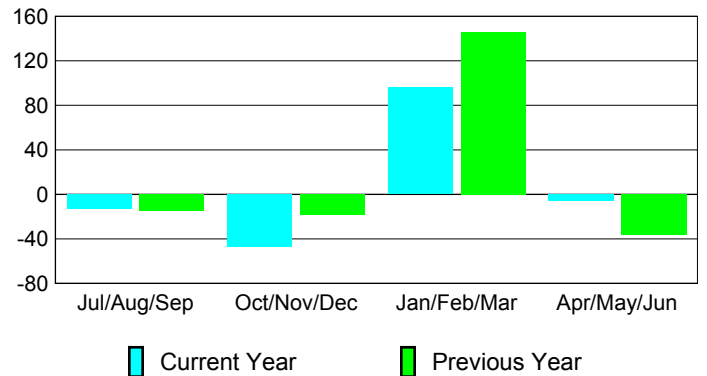
Membership Results 2009-2010

Goal, New, Dropped, Gain/Loss

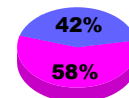


Comparison of Membership Gain/Loss

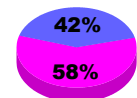
Current Year Compared to the Previous Year



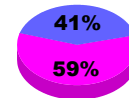
Gender Comparison 2009-2010



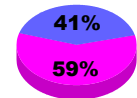
Jul/Aug/Sep



Oct/Nov/Dec



Jan/Feb/Mar



Apr/May/June

Male

Female